



ARGUS REMOTE SYSTEMS AS

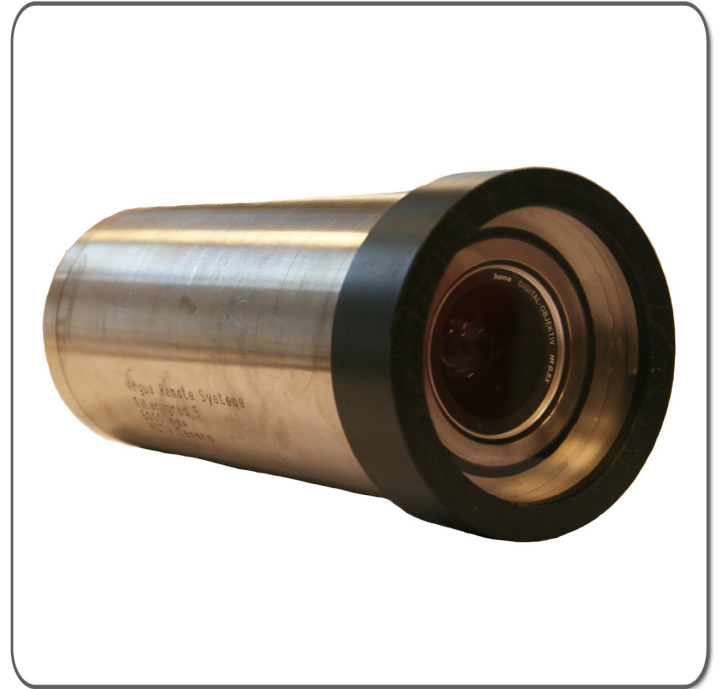
Argus HD-SDI Camera 10 x zoom

The Argus HD Camera housing is made of titanium, with 20mm pyrox glass as viewport.

A SAIV bulkhead connector with coax is placed at the end cap to manage HD-SDI output.

6000msw rated as standard.

Size of housing is OD = 80mm ,
length = 195mm + connector



Inside there is a Sony FCB-H11 Camera with a 0.5x Wide Conversion Lens. The FCB-H11 is a HD-SDI colour camera that combines a 1/3-inch, 1080i with a 10 x optical zoom.

The camera has also a Black&White function. The camera is controlled by RS-232 with a computer or a remote control.

Optional video outputs as Y/C, Composite or Component video is available.



Saiv bulkhead connector with coax



Sony FCB-H11 Camera



Remote Control



Argus HD-SDI Camera 10 x zoom

ARGUS REMOTE SYSTEMS AS

FCB-H11 HD / SD

Image sensor	1/3-Type CMOS
Effective number of pixels	Approx. 2,000,000 Pixels
Aspect ratio	HD 16:9, SD 4:3/16:9
Lens	10x optical zoom, f=5.1 mm (wide) to 51.0 mm (tele), F1.8 To F2.1
Digital zoom	10x (120x with optical zoom)
Horizontal angle of view	75° (Wide) to 8.1° (Tele)* (incl. Wide conversion lens)
Minimum object distance	10 mm (wide) to 800 mm (tele)
Sync system	Internal
Minimum illumination	ICR off mode : 3 lx (typical) (F1.8, 50 IRE), ICR on mode : 1 lx (typical) (F1.8, 50 IRE)
S/N ratio	More than 50 db
Electronic shutter	1/2 To 1/10,000 s, 21 steps
White balance	Auto, Indoor, Outdoor, One-push, Manual
Gain	Auto/Manual (-3 to 18 db, 8 steps)
AE control	Auto, Manual, Shutter Priority, Iris Priority, Bright, Spot AE
EV compensation	-10.5 To 10.5 DB (15 steps, 1.5 DB increments)
Backlight compensation	On/off
Signal system	HD 1080/50i, 720/50p, SD PAL (Crop/Squeeze)
Video output	HD SDI (SMPTE 259M), SD VBS: 1.0 Vp-p (sync negative) Y/C
Focus system	Full Auto (Normal AF/interval AF/Zoom Trigger AF), One-push Trigger, Manual, Infinity, Near Limit Setting
Picture effects	Nega Art, Black & White, Picture Freeze
Camera operation switch	Zoom tele, Zoom wide
Camera control interface	VISCA (TTL signal level), baud rate: 9.6 Kb/s, 19.2 Kb/s, 38.4 Kb/s, stop bit: 1 bit
Storage temperature	-20 to 60 °C (-4 to 140 °F)
Operating temperature	0 to 45 °C (32 to 81 °F)
Power consumption	6 to 12 V DC/4.8 W
Dimensions	(OD x L) 90 X 212 mm

Software FCB-H10

